



Nr.Cert.: 503/1261(5)-1063(6)

SISTEM DE MANAGEMENT AL CALITATII

IN PROIECTAREA, PRODUCTIA SI VANZAREA CONTAINERELOR

CERTIFICAT CONFORM STANDARDULUI ISO 9001/2015



Nr.Cert.: 503/1261(5)-1063(6)



BLUE CONTAINER

str. TUDOR VLADIMIRESCU, NR. 68

ALESU, BIHOR, ROMANIA

RO13132666, J05/517/2000

office@bluecontaineralesu.com

FISA TEHNICA CONTAINER MONOBLOC

DESCRIERE TEHNICĂ GENERALĂ

Structură autoportantă din oțel galvanizat și vopsit, fixat în suruburi. Dimensiuni exterioare: 5980x2400x2570mm

Destinație:

Birou, spațiu de cazare, vestiare, depozitare, cabina portar, magazine, adăposturi provizorii, case de locuit provizorii etc.

1.CONSTRUCTIA CONTAINERULUI

- structura de rezistenta

-stalpii containerului

-executati din otel galvanizat

- rama inferioara si superioara

- executati din otel galvanizat profil tip omega

-structura peretilor

- panou sandwich EPS(polistiren expandat) (culoare RAL 9002 int-ext)

-grosime izolatie EPS 50mm

-coeficientul de conductivitate termica λ_D [W/mK]: 0,067 W/Mk

-clasa de combustibilitate: B1

- stratificatia pardoselii de jos in sus

-ramforsari metalice transversale si longitudinale din profile tip omega

- executate din otel galvanizat

-placa din fibrociment

-grosime:16mm

-cover PVC

- stratificatia tavanului de sus in jos

-2 ramforsari metalice transversale

-executate din otel galvanizat

- panou sandwich spuma PUR (culoare RAL 9002 int-ext)

-grosime izolatie poliuretan 40mm

-coeficientul de conductivitate termica λ_D [W/mK]: 0,030 W/Mk

-clasa de combustibilitate: F

MONOBLOCK CONTAINER TECHNICAL SHEET

GENERAL TECHNICAL DESCRIPTION

Self-supporting structure made from galvanized and painted steel, fixed with screws. External dimensions: 5980x2400x2570mm

Destination:

Office, accomodation, changing rooms, storage, porter's cabin, shops, temporary shelters, temporary housing, etc.

1. CONSTRUCTION OF THE CONTAINER

- resistance structure

- the pillars of the container

- made of galvanized steel

-lower and upper frame

- made of galvanized steel omega type profile

- the structure of the walls

- EPS sandwich panel (RAL 9002 color int-ext)

- expanded polistren thickness 50mm

- the coefficient of thermal conductivity

λ_D [W/mK]: 0.067 W/Mk

-combustibility class: B1

-floor layering from bottom to top

- transversal and longitudinal metal reinforcements from profile type omega

- made of galvanized steel

-Fiber Cement plates

-16mm thickness

- PVC carpet

-layering of the ceiling from top to bottom

- 2 transversal metal omega profile reinforcements

- made of galvanized steel

-polyurethane insulation (colour RAL 9002 int-ext)

-thickness 40mm

- the coefficient of thermal conductivity

λ_D [W/mK]: 0.030 W/Mk

-combustibility class: F



Nr.Cert.: 503/1261(5)-1063(6)

SISTEM DE MANAGEMENT AL CALITATII

IN PROIECTAREA, PRODUCTIA SI VANZAREA CONTAINERELOR

CERTIFICAT CONFORM STANDARDULUI ISO 9001/2015



Nr.Cert.: 503/1261(5)-1063(6)



BLUE CONTAINER

str. TUDOR VLADIMIRESCU, NR. 68

ALESD, BIHOR, ROMANIA

RO13132666, J05/517/2000

office@bluecontaineralesd.com

2.DIMENSIUNILE SI GREUTATEA CONTAINERULUI

Lungime x latime x inaltime:
5.980mm x 2.400mm x 2.570mm
Greutatea :
1200kg

3.DOTARILE CONTAINERULUI (model de baza):

-instalatie electrica

- tablou electric -sig aut 10A(cir. iluminat)
(alimentare mofazica , - sig aut 16A(circuit prize)
CEE,220V-240V , 16A) -releu de protectie impotriva
electrocutarii 40A

-cabluri electrice

-grosime 3x1.5mm simbol CYY-F
-grosime 3x2.5mm simbol CYY-F

-intrerupatoare diferite modele : 1buc

-prize 2P+E diferite modele :2buc

-corp de iluminat : 3buc

--priza monofazica exterioara : 1buc

-usi si ferestre

- **usa** cu invelis metalic si toc metalic vopsita
exterior RAL9002, dim 900x2000mm: 1buc

- **fereastră** dubla(un canat fix, unul cu
deschidere normala) din profile PVC ,
culoare ALB cu sticla termopan ,dimensiune
970/1200mm : 2 buc

-instalatie sanitara – dupa caz

-instalatie de incalzire/ventilatie/climatizare
–dupa caz

2. DIMENSIONS AND WEIGHT OF THE CONTAINER

Length x width x height:
5.980mm x 2.400mm x 2.570mm
Weight :
1200KG

3. CONTAINER EQUIPMENT (basic model):

-electrical installation

- electrical panel-circuit breaker 10A (for lighting)
(single-phase - circuit breaker 16A (for sockets)
power supply, - electric shock protection
CEE 220-240V, relay 40A
16A)

- electric cables

- thickness 3x1.5mm simbol CYY-F
-thickness 3x2.5mm simbol CYY-F

- switches various model: 1pcs

-sockets 2P+E various models : 2pcs

- lighting lamps : 3pcs

- external single-phase socket: 1 pcs

- doors and windows

- **door** with metal coating and metal frame, exterior
painted RAL9002, dim 900x2000mm: 1pcs

- **double window** (one fixed part and one part with
normal opening) made of PVC profiles, WHITE
color with thermal glass, dimmensions
970/1200mm : 2 pcs

-sanitary installation

-as the case may be

- heating/ventilation/air conditioning installation

- as the case may be

Alesd,Bihor,Romania





Nr.Cert.: 503/1261(5)-1063(6)



Nr.Cert.: 503/1261(5)-1063(6)



BLUE CONTAINER

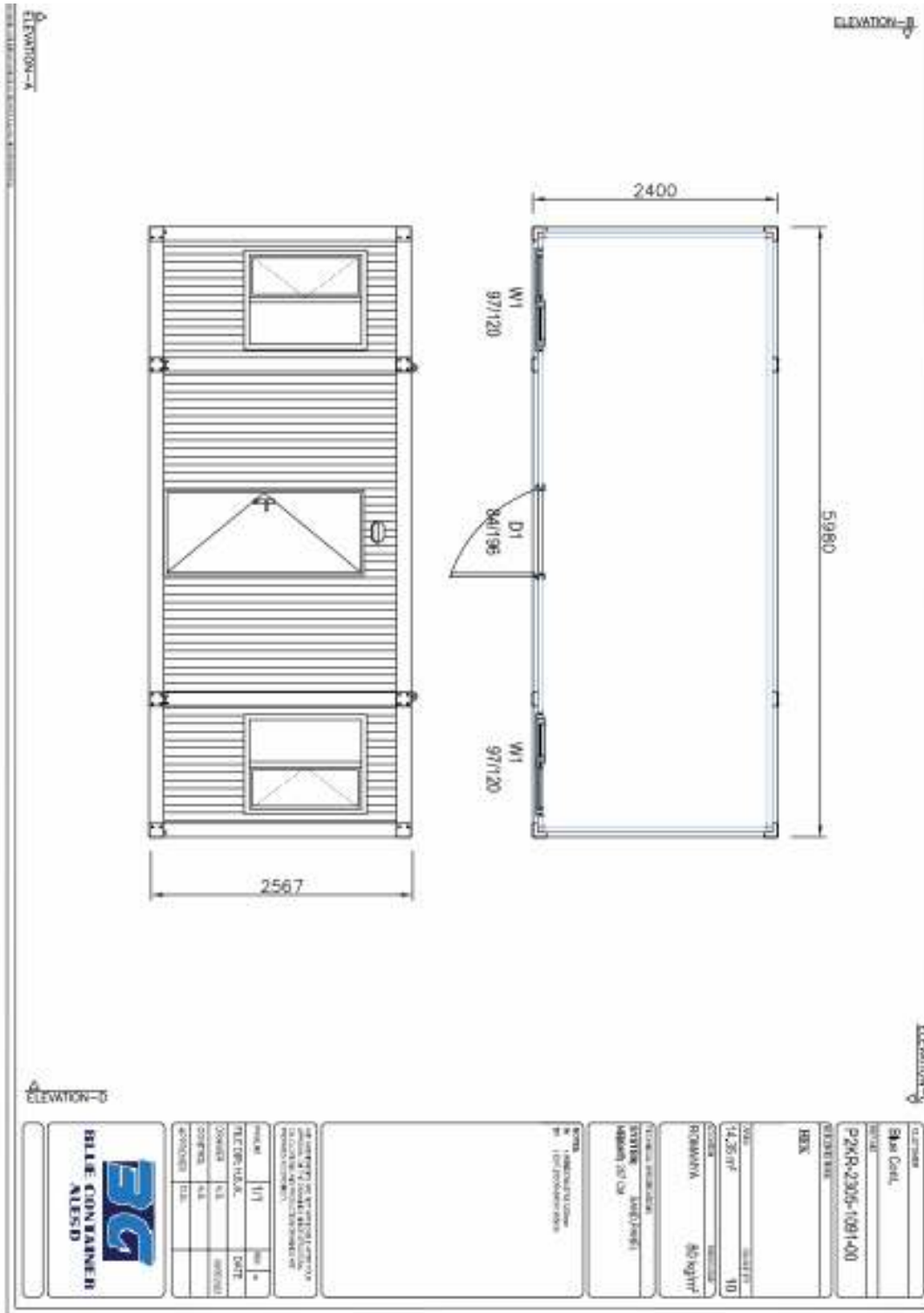
str. TUDOR VLADIMIRESCU, NR. 68

ALES D, BIHOR, ROMANIA

RO13132666, J05/517/2000

office@bluecontaineralesd.com

SISTEM DE MANAGEMENT AL CALITATII
IN PROIECTAREA, PRODUCTIA SI VANZAREA CONTAINERELOR
CERTIFICAT CONFORM STANDARDULUI ISO 9001/2015





Nr.Cert.: 503/1261(5)-1063(6)



Nr.Cert.: 503/1261(5)-1063(6)

SISTEM DE MANAGEMENT AL CALITATII
IN PROIECTAREA, PRODUCTIA SI VANZAREA CONTAINERELOR
CERTIFICAT CONFORM STANDARDULUI ISO 9001/2015



BLUE CONTAINER

str. TUDOR VLADIMIRESCU, NR. 68

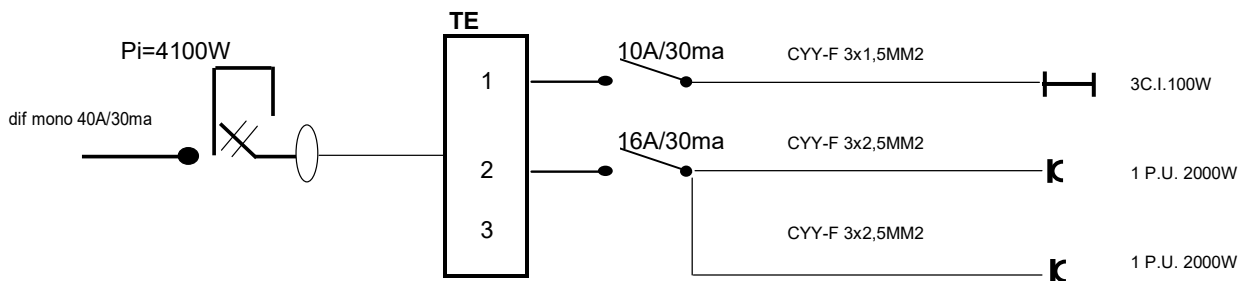
ALESU, BIHOR, ROMANIA

RO13132666, J05/517/2000

office@bluecontaineralesd.com

SCHEMA ELECTRICA CONTAINERE SERIA HEK

Nr circuite	Destinatie	Putere
1	Iluminat	100W
2	Priza uzuala	2000W
3	Priza uzuala	2000W
	Putere instalata	4100W
	Putere simultan absorbita	0.6
		2460W



Toate cablurile sunt pozate in canalet PVC in partea superiara a containerului.

